



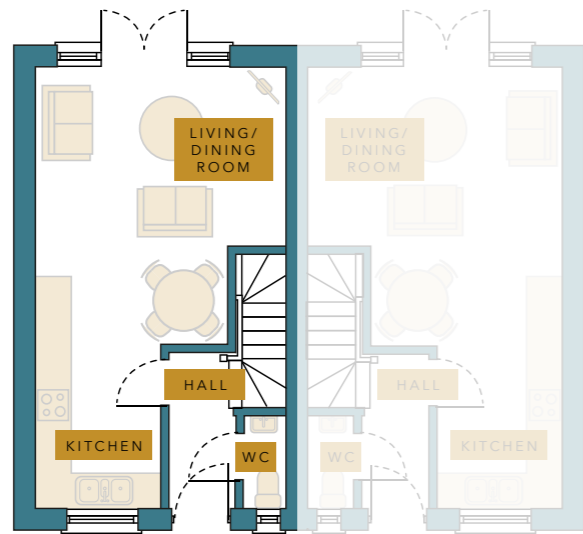
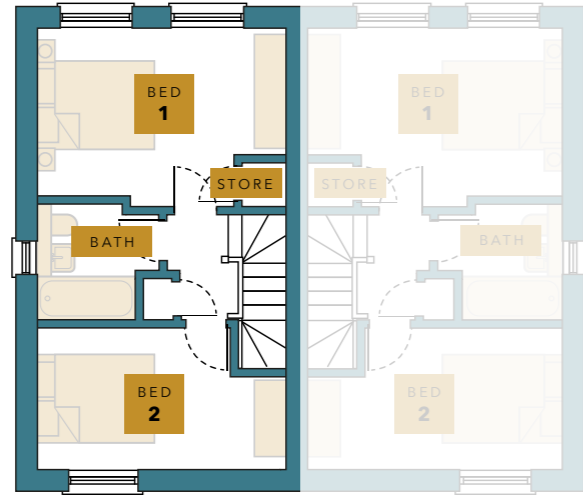
LONG CLAWSON

# THE WILLOWS

2 BEDROOM SEMI-DETACHED HOME



## FLOORPLANS



## SPECIFICATION

### Kitchen

Choice of Luxurious fitted kitchens, crafted to become the heart of your home

Neff Stainless steel electric oven

Neff Stainless steel gas hob

Neff Stainless steel canopy hood

Neff Fitted fridge/freezer

Brushed chrome spotlight fittings

Choice of Design led Porcelanosa ceramic wall tiles

### Plumbing

A rated gas fired Ideal Logic boiler and central heating

Contemporary sanitary ware - White finish

Chrome taps & fittings

Plumbing & space for washing machine

Chrome heated Towel rails to Bathroom

Chrome thermostatic mixer shower over bath

Iconic Express over Bath Glass shower screens to baths

Outside Tap

### Electrical

Smoke detectors

Doorbell

Contemporary style outside light

TV point to living area

Shaver points in bathroom

Wired Intruder alarm System

BT Fibre connection

### Internal Specification

Choice of Design led Porcelanosa ceramic wall and floor tiles for bathrooms and Kitchens

Oak panel doors with chrome handles

5" Ogee Skirting Boards

3" Ogee Architraves

Plastered ceiling through out

Decoration - White ceilings, Cornforth White walls and White satin woodwork

### General Specification

Turfed rear gardens with Key lock Gates

Landscape Planting to Fronts

Clay Pantile main roof

Elegance cast iron effect UPVC guttering

Located of an exclusive landscaped private drive

Block paved driveway

Timber double glazed windows Rear Sliding doors opening up your living space and leading into your garden

NHBC 10 year Warranty

## DIMENSIONS

### GROUND FLOOR

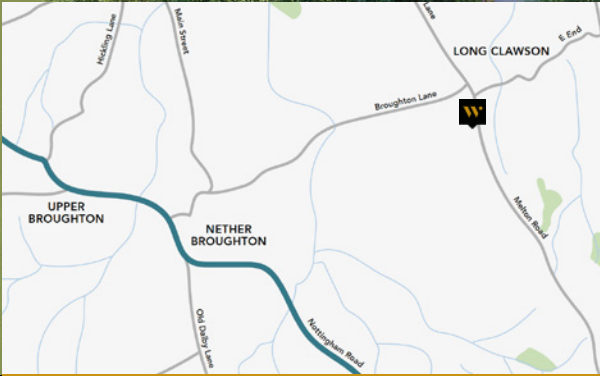
Living/dining Room	4692 x 4384mm	15' 4" x 14'
Kitchen	2857 x 2150mm	9' 37" x 7' 1"
Hall	2750 x 1200mm	9' 02" x 3' 9"
WC	1620 x 880mm	5' 31" x 2' 9"

### FIRST FLOOR

Bedroom 1	4384 x 3032mm	14' 4" x 9' 95"
Bedroom 2	4384 x 2430mm	14' 4" x 7' 97"
Bathroom	2220 x 2080mm	7' 28" x 6' 82"
Store Room	1300 x 900mm	4' 27" x 3'

# PLOT 5 THE WILLOWS

5



**waters**  
HOMES

T. 0116 230 1936  
E. [info@watershomes.co.uk](mailto:info@watershomes.co.uk)

The Old Rectory, Main Street,  
Glenfield, Leicester. LE3 8DG  
[watershomes.co.uk](http://watershomes.co.uk)